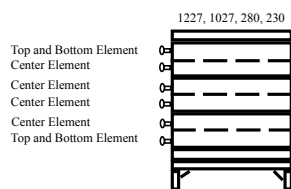
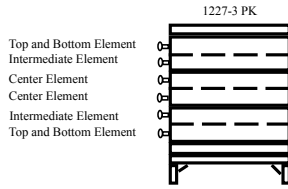
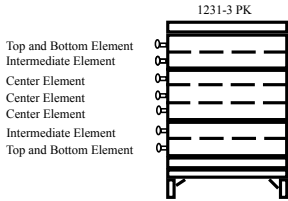


# PARTS

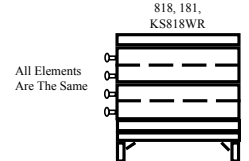
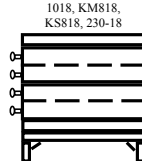
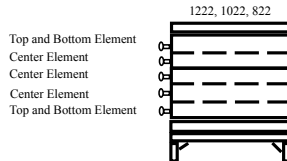
prices effective January 15, 2024



## SKUTT KILNS PARTS PRICE LIST



### ELEMENT LOCATION



### Elements

MODEL	VOLTS	PHASE	LOCATION	Qty in Kiln	Standard Part #	Standard Price	APM* Part #	APM* Price
KMT/KM1627-3" PK	240	3	Top/ Bottom	4	0409	\$59.00	1692	\$145.00
			Intermediate	4	0410	\$59.00	1693	\$145.00
			Center	4	0411	\$59.00	1694	\$145.00
	208	3	Top/ Bottom	4	0406	\$59.00	1695	\$145.00
			Intermediate	4	0407	\$59.00	1696	\$145.00
			Center	4	0408	\$59.00	1697	\$145.00
KMT/KM1627-3" PK-LF	240	1/3	Top/ Bottom	4	2540	\$59.00	1698	\$145.00
			Intermediate	4	2541	\$59.00	1699	\$145.00
			Center	4	2542	\$59.00	1700	\$145.00
	208	1/3	Top/ Bottom	4	2543	\$59.00	1661	\$145.00
			Intermediate	4	2544	\$59.00	1662	\$145.00
			Center	4	2545	\$59.00	1663	\$145.00
KMT/KM1231-3" PK	240	1	Top/ Bottom	2	1429	\$67.00	1664	\$165.00
			Intermediate	2	1430	\$67.00	1665	\$165.00
			Center	3	1431	\$67.00	1666	\$165.00
	208	1	Top/ Bottom	2	1432	\$67.00	1667	\$165.00
			Intermediate	2	1433	\$67.00	1669	\$165.00
			Center	3	1434	\$67.00	1668	\$165.00
	240	3	Top/ Bottom	2	1435	\$67.00	1664	\$165.00
			Intermediate	2	1436	\$67.00	1665	\$165.00
			Center	3	1437	\$67.00	1666	\$165.00
	208	3	Top/ Bottom	2	1438	\$67.00	1667	\$165.00
			Intermediate	2	1439	\$67.00	1669	\$165.00
			Center	3	1440	\$67.00	1668	\$165.00

# Elements

MODEL	VOLTS	PHASE	LOCATION	Qty in Kiln	Standard Part #	Standard Price	APM ** Part #	APM ** Price
KMT/KM1227-3" PK	240	1	Top/ Bottom	2	1441	\$67.00	1640	\$165.00
			Intermediate	2	1442	\$67.00	1641	\$165.00
			Center	2	1443	\$67.00	1642	\$165.00
	208	1	Top/ Bottom	2	1548	\$67.00	1658	\$165.00
			Intermediate	2	1549	\$67.00	1659	\$165.00
			Center	2	1550	\$67.00	1660	\$165.00
	240	3	Top/ Bottom	2	1444	\$67.00	1640	\$165.00
			Intermediate	2	1445	\$67.00	1641	\$165.00
			Center	2	1446	\$67.00	1642	\$165.00
	208	3	Top/ Bottom	2	1447	\$67.00	1658	\$165.00
			Intermediate	2	1448	\$67.00	1659	\$165.00
			Center	2	1449	\$67.00	1660	\$165.00
KMT/KM1227-3, KS1227-3", 280-3	240	1/3	Top/ Bottom	2	1368	\$67.00	1654	\$165.00
		1/3	Center	4	1370	\$67.00	1655	\$165.00
	208	1/3	Top/ Bottom	2	1369	\$67.00	1650	\$165.00
	208	1	Center	4	1371	\$67.00	1651	\$165.00
		3	Center	4	1391	\$67.00	1687	\$165.00
KMT/KM1027, KS1027, 230, 231, 235	240	1/3	Top/ Bottom	2	0171	\$67.00	1656	\$165.00
		1/3	Center	4	0172	\$67.00	1657	\$165.00
	208	1/3	Top/ Bottom	2	1372	\$67.00	1671	\$165.00
		1	Center	4	1375	\$67.00	2742	\$165.00
		3	Center	4	1392	\$67.00	1672	\$165.00
KMT/KM1027-3", KS1027-3"	240	1/3	Top/ Bottom	2	1373	\$67.00	1684	\$165.00
		1/3	Center	4	1376	\$67.00	1685	\$165.00
	208	1/3	Top/ Bottom	2	1374	\$67.00	1649	\$165.00
		1	Center	4	1377	\$67.00	2743	\$165.00
		3	Center	4	1393	\$67.00	2744	\$165.00
KMT/KM1222-3"	240	1/3	Top/Bottom	2	3266	\$67.00	3271	\$165.00
	240	1/3	Center	3	3267	\$67.00	3272	\$165.00
	208	1	Top/Bottom	2	3268	\$67.00	3273	\$165.00
	208	3	Top/Bottom	2	3270	\$67.00	3275	\$165.00
	208	1	Center	3	3269	\$67.00	3274	\$165.00
	208	3	Center	3	3249	\$67.00	3349	\$165.00
KMT/KM1022	240	1/3	Top/Bottom	2	3258	\$67.00	3276	\$165.00
	240	1/3	Center	3	3259	\$67.00	3277	\$165.00
	208	1/3	Top/Bottom	2	3260	\$67.00	3278	\$165.00
	208	1/3	Center	3	3261	\$67.00	3279	\$165.00
KMT/KM1022-3	240	1/3	Top/Bottom	2	3262	\$67.00	3280	\$165.00
	240	1/3	Center	3	3263	\$67.00	3281	\$165.00
	208	1/3	Top/Bottom	2	3264	\$67.00	3282	\$165.00
	208	1/3	Center	3	3265	\$67.00	3283	\$165.00
KMT/KM822	240	1	Top/Bottom	2	3250	\$57.00	3284	\$135.00
	240	1	Center	3	3251	\$57.00	3285	\$135.00
	208	1	Top/Bottom	2	3252	\$57.00	3286	\$135.00
	208	1	Center	3	3253	\$57.00	3287	\$135.00
KMT/KM822-3	240	1	Top/Bottom	2	3254	\$57.00	3288	\$135.00
	240	1	Center	3	3255	\$57.00	3289	\$135.00
	208	1	Top/Bottom	2	3256	\$57.00	3290	\$135.00
	208	1	Center	3	3257	\$57.00	3291	\$135.00

# Elements

MODEL	VOLTS	PHASE	LOCATION	Qty in Kiln	Standard Part #	Standard Price	APM <sup>2</sup> Part #	APM <sup>2</sup> Price
KMT/KM1218-3	240	1/3	Top/ Bottom	2	2550	\$67.00	2719	\$165.00
			Center	2	2551	\$67.00	2720	\$165.00
	208	1/3	Top/ Bottom	2	2552	\$67.00	2721	\$165.00
			Center	2	2553	\$67.00	2722	\$165.00
KMT/KM1018, KS1018, 231-18	240	1	Top/ Bottom	2	0176	\$67.00	2725	\$165.00
			Center	2	0177	\$67.00	2726	\$165.00
	208	1	Top/ Bottom	2	0295	\$67.00	1673	\$165.00
			Center	2	0296	\$67.00	1674	\$165.00
KMT/KM1018-3", KS1018-3	240	1	Top/ Bottom	2	1378	\$67.00	2727	\$165.00
			Center	2	1380	\$67.00	2728	\$165.00
	208	1	Top/ Bottom	2	1379	\$67.00	1675	\$165.00
			Center	2	1381	\$67.00	1676	\$165.00
KMT/KM818, KS818 <sup>3</sup>	240	1	Top/ Bottom	2	1540	\$57.00	2700	\$135.00
			Center	2	1541	\$57.00	2701	\$135.00
	208	1	Top/ Bottom	2	1542	\$57.00	1678	\$135.00
			Center	2	1543	\$57.00	1679	\$135.00
KMT/KM818-3", KS818-3" <sup>3</sup>	240	1	Top/ Bottom	2	1544	\$57.00	2723	\$135.00
			Center	2	1545	\$57.00	2724	\$135.00
	208	1	Top/ Bottom	2	1546	\$57.00	1689	\$135.00
			Center	2	1547	\$57.00	1690	\$135.00
KMT/KM818-3" 30 AMP, KS818P-3" <sup>3</sup>	240	1	Top/ Bottom	2	1552	\$57.00	Call For Pricing	
			Center	2	1553	\$57.00	Call For Pricing	
	208	1	Top/ Bottom	2	1554	\$57.00	Call For Pricing	
			Center	2	1555	\$57.00	Call For Pricing	
818 <sup>3</sup> , KS818WR <sup>1,3</sup> , 181-27 <sup>1,3</sup> , 185 <sup>3</sup>	240	1	ALL	4	0269	\$57.00	Call For Pricing	
	208		ALL	4	0318	\$57.00	Call For Pricing	
818-3" <sup>3</sup> , KS818-3"WR <sup>1,3</sup>	240	1	ALL	4	1386	\$57.00	Call For Pricing	
	208		ALL	4	1387	\$57.00	Call For Pricing	
KS818P <sup>3</sup> , KS818PWR <sup>1,3</sup> , 183 <sup>3</sup> , 183-27 <sup>1,3</sup>	240	1	ALL	4	0272	\$57.00	Call For Pricing	
	208		ALL	4	1382	\$57.00	Call For Pricing	
KS818P-3"WR <sup>1,3</sup>	240	1	ALL	4	1388	\$57.00	Call For Pricing	
	208		ALL	4	1389	\$57.00	Call For Pricing	
181, 180	208/240	1	ALL	4	1383	\$57.00	Call For Pricing	
KMT/KM714, KS714, 145, 145 WR <sup>1</sup>	208/240	1	ALL	3	0472	\$47.00	1677	\$115.00
KMT/KM614-3, KS614-3	115	1	ALL	3	1029	\$47.00	2642	\$115.00
KS609	115	1	ALL	2	0340	\$47.00	1688	\$115.00
GlazeTech	240	1	ALL	4	3021	\$37.00	3186	\$71.00
	208		ALL	4	3022	\$37.00	3187	\$71.00
FireBox 8x4, FireBox 8x6	115	1	ALL	2	0910	\$37.00	Call For Pricing	

<sup>1</sup> Kilns with Wired Rings (-27 on older models) include 2 additional Elements except model 145WR which has 1 additional Element.

<sup>2</sup> APM Elements are engineered to last longer in applications with high temperatures and long hold times.

<sup>3</sup> KS818, KS818-3" and KS818P-3" models began using the same element design as their corresponding KM818 models on October 1st, 2017. If you are replacing **ALL** the elements in a model built prior to this date, we suggest you use the corresponding model KM elements. WR kilns and individual replacements, must use old design.

## Element Accessories

Element Pins - Package of 12	1018	\$6.00
Element Connectors - Crimp On -Package of 6	0074	\$19.00
Element Connector - Screw On - Large	1104A25314	\$16.10
Element Connector - Screw On - Small	1105A25314	\$10.00
Porcelain Insulator	0173S01338	\$1.20

# KilnMaster Parts

Description	Part #	Price
Thermocouples		
Type K Thermocouple (8 ga.) with Block and Wire	1506	\$42.00
Type K Thermocouple Replacement - Element Only (8 ga.)	1515	\$22.00
Type K Thermocouple Replacement - Element Only (8 ga.) FireBox 8x6 LT, FireBox 8x4 LT	3360	\$23.00
Type K Thermocouple Block	1913O20338	\$15.00
Type K Thermocouple with plug for KM-1 Wall Mount (MI Cable)	1595	\$120.00
Type S Thermocouple w/protection tube and block	1581	\$300.00
Type S Thermocouple Block and Protection Tube (Thermocouple not included)	2098C02070	\$105.00
Thermocouple Mounting Flange 1/4" For KM-1 Wall Mount Controller	2117	\$23.00
Relays		
25 Amp Relay (Black Case) - All Newer Or Upgraded KM Kilns (Not PK Kilns)	2139C01094	\$40.00
25 Amp Relay (Clear Case) - All Older KM Kilns (Not PK Kilns)	1517	\$46.00
50 Amp Relay - 1 Phase KM-1 Wall Mount Controller	1982T20338	\$125.00
40 Amp Relay - 3 Phase KM-1 Wall Mount Controller	1983C14338	\$110.00
Pilot Relay - All PK Kilns and KM-1 Wall Mount Controller	2010C01094	\$14.00
Solid State Relay - FireBox 8x4 LT, FireBox 8x6 LT, GlazeTech	2715	\$88.00
KM Harness Wire Sets		
KM Harness Wire Set - KM1627PK/KM1231PK/KM1227PK 1 Phase/3 Phase (Specify if for Zone Control)	3356/3357	\$83.00
KM Harness Wire Set - KM1227/KM1027/KM1222/KM1022/KM1022-3/KM822/KM822-3 1 Phase (Specify if for Zone Control)	2560	\$47.00
KM Harness Wire Set - KM1227/KM1027/KM1222/KM1022/KM1022-3 3 Phase (Specify if for Zone Control)	2561	\$50.00
KM Harness Wire Set - KM1218 1 Phase	2562	\$42.00
KM Harness Wire Set - KM1218 3 Phase	2563	\$42.00
KM Harness Wire Set - KM1018/KM818 1 Phase (Specify if for Zone Control)	2564	\$39.00
KM Harness Wire Set - KM714 1 Phase	2565	\$31.00
KM Harness Wire Set - KM614 1 Phase	2566	\$31.00
Single output wire 3 section kiln	2622	\$3.00
Single output wire 2 section kiln	2623	\$2.50
KM Element Feeder Wire Sets		
KM1627PK - Includes Bus Bars	3624	\$115.00
KM1627PK-LF - Includes Bus Bars	3625	\$108.00
KM1231PK - New Style - Includes Bus Bars	2558	\$90.00
KM1227PK - New Style - Includes Bus Bars	2559	\$85.00
KM1227-3, KM1027, KM1027-3	1583	\$62.00
KM1222-3, KM1022, KM1022-3, KM822, KM822-3	3626	\$60.00
KM1218-3	2164	\$48.00
KM1018, KM1018-3	1584	\$45.00
KM818, KM818-3	1585	\$45.00
KM714	1586	\$38.00
KM614-3	1589	\$38.00
GlazeTech	3628	\$32.00
Transformer		
Touchpad with Circuit Board (For standard type K thermocouple)	1507	\$375.00
Touchpad with Circuit Board (For standard type K thermocouple) FireBox 8x4 LT, FireBox 8x6 LT, GlazeTech	3141	\$265.00
Current Sensor		
Terminal Strip Replacement with Tabs	1519	\$34.00
Terminal Block - 1 Phase - All KM 1 PH Models Except KM714 and smaller kilns (Also Used On Heat Baffle Of Newer PK kilns)	1906C01338	\$22.00
Terminal Block - 3 Phase - All KM 3 PH Models and KM714	1925C01338	\$22.00
Easy View		
Type K Thermocouple Lead Wire With Connectors For 22" Deep Kilns Or Greater - High Temp Cloth - 15" Length	2237	\$10.00
Type K Thermocouple Lead Wire With Connectors For 18" Deep Kilns Or Less - High Temp Cloth - 12" Length	2236	\$9.50
Type K Thermocouple Extension Wire By The Inch (Vinyl)	1910G20076	\$0.30
Type K Thermocouple Extension Wire - 8ft. With Jack For KM-1 Wall Mount Controller (Vinyl)	1512	\$45.00

# KilnMaster Parts

Description	Part #	Price
Fuse 50 AMP	2212C01338	\$24.00
Fuse 0.5 AMP	1921C01338	\$2.50
Fuse Holder 0.5 AMP	1904C01338	\$12.00

# KilnSitter Parts

Description	Models	Part #	Price
Shut Off Tube Assembly - Old Style - 6.0" (Short)	145, 180, 181, 183, 185, 230, 231, 231-18, 235	0114	\$65.00
Shut Off Tube Assembly - New Style - 7.0" (Long)	609, 818, 818P, 1018, 1027	0339	\$65.00
Shut Off Tube Assembly - 7.5" (X-Long)	All Models With 3" Brick	0369	\$65.00
Sensing Rod - 7.125" - Old Style	145, 180, 181, 183, 185, 230, 231, 231-18, 235	0118D02641	\$12.00
Sensing Rod - 8.0" New Style	609, 714, 818, 818P, 1018, 1027	0419D02641	\$12.00
Sensing Rod - 8.5"	For 3" Brick Models - (Measure the length of your old one)	1001D02641	\$12.00
Sensing Rod - 9.0"	For 3" Brick Models - (Measure the length of your old one)	0991D02641	\$12.00
Claw with Guide Plate		0285	\$20.00
Pinned Claw - Old Style		0132D02641	\$15.00
Cone Rests (1 Pair)		0113D02641	\$14.00
Gauge Washer		0873D02641	\$9.00
Switch Block with Contact and Plunger		0122	\$100.00
Model LT-3K - Includes Tube Assembly	Specify Phase & Tube Size	KS-LT-3K	\$230.00
Model LT-3K 120V - Includes Tube Assembly	Specify Phase & Tube Size	KS-LT3K120	\$230.00
Timer Knob		0674K04641	\$18.00
Timer Motor - New Style	All KS Kilns Except 614-3 and 609 (specify phase)	0851H08338	\$98.00
Timer Motor - 120 Volt	614, 609	1036D02641	\$98.00
120V Infinite Switch (w/o Knob)	614	0188R06184	\$54.00
240V Infinite Switch (w/o Knob)	818, 818P, 181-27, 183, 185	0874	\$57.00
Infinite Switch Knob Only		0214J02673	\$17.00
<b>NEW STYLE 3 Heat Switch Package</b> (includes switch, knob, wire & connectors)	1227-3, 1027, 1018, 714, 609 280, 235, 231, 231-18, 230, 181, 180, 145	0243	\$50.00
<b>Feeder Wire Set - NEW STYLE 3 Heat Switch</b> - One per switch		0244	\$26.00
Interbox Plug and Receptacle Upgrade Kits			
Upgrade Kit (No Boxes)	181	0940	\$40.00
Upgrade Kit (No Boxes)	181-27, 183, 183-27, 185, 185-27, 230, 231, 231-18, 235, 280	0941	\$40.00
Upgrade Kit (2 Boxes)	1227 1 PH, 1027 1PH, 818WR, 818PWR	0945	\$160.00
Upgrade Kit (2 Boxes)	1227 3PH, 1027 3PH	0947	\$160.00
Upgrade Kit (1 Box)	1018	0948	\$95.00
Upgrade Kit (1 Box)	818, 818P	0946	\$95.00
Upgrade Kit - Blank Ring (1 Box) for KS Kilns		0949	\$75.00
Feeder Wire Set - Infinite Switch - One set per switch		0974	\$23.00
Feeder Wire Set - 3 Heat Switch (OLD STYLE) - One set per switch		0976	\$28.00
Harness Wire Set - 1 Set Required	714, 145	0149	\$18.00
Harness Wire Set - 1 Set Required	818, 818P, 185, 183	0148	\$19.00
Harness Wire Set - 1 Set Required	1018, 231-18	0137	\$19.00
Harness Wire Set - 1 Set Required	1227-3, 1027, 280, 235, 231, 230 (single phase models)	0975	\$45.00
Harness Wire Set - 1 Set Required	1227-3, 1027, 280, 235, 231, 230 (3 phase models)	0955	\$48.00
Pilot Lite - 240V		0128D08338	\$25.00
Thermocouple Replacement w/ 6FT Lead wire	For Analog Pyrometer	0021	\$48.00
Thermocouple Mounting Flange (1/2")	For Analog Pyrometer	1053	\$18.00
Primary Switch Box with Shield and Type LT-3K Faceplate *	1227-3 (Specify Model, Voltage, and Phase)	0589	\$535.00
Primary Switch Box with Shield and Type LT-3K Faceplate *	1027, 1027-3 (Specify Model, Voltage, and Phase)	0247	\$535.00
Primary Switch Box with Shield and Type LT-3K Faceplate *	1018, 1018-3 (Specify Model, Voltage, and Phase)	1367	\$535.00

\*Does Not Include Tube Assembly

For pricing on KilnSitter boxes not listed please call the factory.

# KilnMaster Boxes Complete

Description	Part #	Price
KM Box Complete - KM818, KM1018	1522	\$770.00
KM Box Complete - KM1218-3 1PH	2784	\$880.00
KM1222-3, KM1022, KM1022-3, KM822, KM822-3 1PH	3166	\$920.00
KM1222-3, KM1022, KM1022-3 3PH	3167	\$980.00
KM Box Complete - KM1027 1PH, KM1227 1PH	1520	\$930.00
KM Box Complete - KM1027 3PH, KM1227 3PH	1521	\$990.00
KM Box Complete - KM1227-3 PK 1PH (Call For 3PH Pricing)	3780	\$1600.00
KM Box Complete - KM1231-3 PK 1PH (Call For 3PH Pricing)	3760	\$1625.00

## Miscellaneous Items

Description	Part #	Price
Peep Plugs	0169M16587	\$7.50
Venting Prop (Brick Wedge)	0168	\$7.00
1 lb bag of Kiln Wash	0283	\$6.00
5 lb bag of Kiln Wash	0284	\$20.00
Pint Kiln Patch	0291	\$12.00
Pint Sairset	0290	\$16.00
Kiln Stand - 1627-3	2567	\$325.00
Kiln Stand - 1231-3	0281 & 0270	\$223.00
Kiln Stand - 12 Sided Kilns (Except KM1231)	0281	\$120.00
Kiln Stand - 10 Sided Kiln and GlazeTech	0170	\$103.00
Kiln Stand - 8 Sided Kiln	0270	\$99.00
Kiln Stand - 7 and 6 sided Kilns	0470	\$96.00
Plastic Kiln Stand Feet (Each)	0752P03673	\$2.00

Description	Part #	Price
EnviroVent 2 Replacement Motor	2449	\$380.00
8 Ft Duct Extension Kit	2477	\$40.00
EV-2 Rolling Stand Adapter	3361	\$33.00
2.8 oz Silicone	1638	\$8.00
KilnMaster Owners Manual (OLD)	2003D11678	\$8.50
KilnMaster Owners Manual (NEW)	2040D11678	\$8.50
KilnSitter Owners Manual	0936D22678	\$8.50
KilnSitter Owners Manual - Old Style	0604D11678	\$8.50
EnviroVent 2 Owners Manual	2462D22003	\$6.00
Dual Input Digital Pyrometer	2783	\$160.00
K-2 Digital Pyrometer	1094	\$95.00

## Power Cord Sets and Plugs

Power Cord Pricing Includes Plug, Connectors and Screws

MODEL	Phase	Cord Part #	Cord Price	Plug Part #	Plug Price
All PK Kilns	1/3	Call For Pricing		N/A	N/A
KM1227-3, KM1218-3, KM1027, KM1027-3, KM1222-3, KM1022, KM1022-3	1	0703	\$125.00	0879E01219	\$78.00
(Specify KM)	3	0908	\$170.00	0819C14219	\$99.00
KS1227-3, KS1218-3, KS1027, KS1027-3, 280, 235, 231, 230	1	0705	\$125.00	0879E01219	\$78.00
(Specify KS)	3	0908	\$170.00	0819C14219	\$99.00
KM1018, KM1018-3, KM822, KM822-3, KM818, KM818-3	1	0704	\$80.00	0879E01219	\$78.00
KS1018, KS1018-3, KS818, KS818-3, KS818P, 231-18, 185, 183	1	0139	\$80.00	0879E01219	\$78.00
KM818-3" 30A	1	0706	\$80.00	0632P08219	\$55.00
KM714	1	0708	\$88.00	0883E01219	\$52.00
KS714, 181, 145	1	0105	\$88.00	0883E01219	\$52.00
KM614-3, KS614-3	1	0716	\$52.00	0477C14219	\$23.00
KS609	1	0595	\$30.00	0223C14219	\$17.00
HotStart Pro, FireBox 8, FireBox 14	1	2417E09076	\$30.00	0223C14219	\$17.00
KM-1 Wall Mount Controller 1 PH	1	0703	\$125.00	0879E01219	\$78.00
KM-1 Wall Mount Controller 3PH (Specify KM)	3	0908	\$170.00	0819C14219	\$99.00
Power Cord Strain Relief - 6 AWG For 818 and Larger Kilns (Not PK Kilns)				1905C14338	\$8.00

## Receptacles

Description	Models	Part #	Price
3 Wire 30 Amp Surface Mount Receptacle 1PH	KM818-3" 30A	0616P38227	\$48.00
4 wire 30 Amp Surface Mount Receptacle 1PH	714. KM and KS models	0884E01227	\$68.00
3 Wire 50 Amp Flush Mount Receptacle 1PH	All 1PH KM, KM-1 and KS Units over 30 AMPS (Except PKs)	0898C14227	\$40.00
3 Wire 50 Amp Flush Mount Receptacle 3PH	All 3PH KM, KM-1 and KS Units (Except PKs)	0882E01227	\$90.00

# Kiln Hardware

Description	Models	Part #	Price
Lid Brace Package (Includes bar, anchor pad, guard and screws)	609, 614-3 (Specify Model)	0337	\$29.00
Lid Brace Package	714	0364	\$32.00
Lid Brace Package	818, 822	0320	\$32.00
Lid Brace Package	1018,1027, 1022 (with Lid Lifter)	0323	\$62.00
Lid Brace Package	1018,1027 (non Lid Lifter Models)	0231	\$66.00
Lid Brace Package	1231-3, 1227-3, 1222-3, 1218-3	0363	\$62.00
Lid Brace Package	1627-3 and 14-sided kilns with dual lid braces	0316	\$120.00
Lid Brace Anchor Pad (includes screws)	822 and smaller (Larger kilns upgrade to new lid brace)	0053	\$10.00
Anchor Pad Thumb Screw	822 and smaller (Larger kilns upgrade to new lid brace)	0155B28233	\$3.50
Lid Handle - Old Style (includes screws)	All models except 280, 1227-3	0088	\$10.00
Lid Handle - Old Style (includes screws)	1227-3, 280	0507C12092	\$13.00
Section Handle (includes screws)	All Models	0342C12092	\$11.00
Section Latch (Draw Pull Catch) (includes screws)	All Models	0073	\$9.00
Lid Hinge Leaf (Specify left or right and kiln model)	All Models except 280, 1227 (Non Lid Lifter Models)	0146C03092	\$9.00
Body Hinge Leaf (Specify left or right and kiln model)	All Models except 280, 1227 (Non Lid Lifter Models)	0147C03092	\$11.00
Lid Hinge Strut	All 10 and 12 sided kilns (Non Lid Lifter Models) (specify model)	2319E05092	\$12.00
Lid Hinge Strut	All 8 sided kilns	0966E05092	\$12.00
Body Hinge Strut	All 10 and 12 sided kilns (Non Lid Lifter Models)	2320E05092	\$12.00
Body Hinge Strut	All 8 sided kilns	0967E05092	\$12.00
Lid hinge Pivot Rod with Cotter Pin	Specify Model (Non Lid Lifter Models)	0050	\$11.00
Lid Lifter Kit	1231-3, 1227-3, 1222-3 1218-3	2397	\$525.00
Lid Lifter Kit	1027, 1022, 1018	2398	\$510.00
Lid Lifter Kit	1027-3, 1022-3, 1018-3	2399	\$510.00
Lid Latch/Prop Kit	All Lid Lifter Models	2249	\$29.00
Control Box Hinge (Band Portion Only)	All KM and KS Models	1916P08092	\$4.00
#6 x 1/2" Sheet Metal Screw		0103P05233	\$0.12
#8 x 1/2" Sheet Metal Screw		0093B28233	\$0.16

## Lid, Slab & Body Bands

Models (For Body Bands specify Model and Top, Bottom or Center)	Lid/Slab Band Part #	Lid/Slab Band Price	Body Band Part #	Body Band Price
1627-3	2239	\$62.00	Call For Pricing	
1231-3 (Top and bottom sections only), 1227-3, 1218-3	0376	\$35.00	0366	\$98.00
1231-3 (Center section only)	N/A	N/A	0312	\$110.00
1027-3, 1018-3	0481	\$30.00	0157	\$85.00
1027, 1018	0159	\$30.00	0157	\$85.00
1022 (Center section only)	N/A	N/A	3390	\$105.00
822 (Center section only)	N/A	N/A	3391	\$90.00
818-3	0694	\$27.00	0257	\$75.00
818	0259	\$27.00	0257	\$75.00
714	0351	\$25.00	0459	\$85.00
614-3	0348	\$24.00	0349	\$75.00
609	0346	\$24.00	0347	\$54.00

## Blank Ring Bands

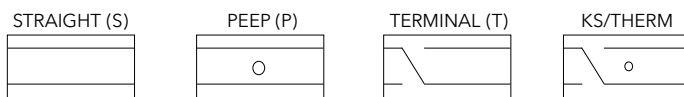
Description	Part #	Price
714, 145	0458	\$35.00
818, 818-3, 181, 185	0258	\$38.00
1027, 1018, 1027-3", 1018-3", 231, 235	0158	\$43.00
1227-3, 280	0368	\$50.00

# Connectors and Wires

Description	Part #	Price
C53 Flag Lug	0007A25314	\$1.50
Female Tab Connector - Insulated (yellow) for 12-10 AWG wire	2490H17314	\$1.15
Female Tab Connector - Insulated (Blue) for 14 AWG wire	1922H17314	\$0.40
Large Ring Tongue Connector (Power Cord) for 6 AWG wire	0059H17314	\$1.00
Small Ring Tongue Connector (Power Cord) for 8AWG wire	0999H17314	\$0.95
Ring Tongue Connector (KM Harness Wire to Terminal Strip) for 12-10 AWG wire	2491H17314	\$0.85
Ring Tongue Connector (KM Harness Wire To Terminal Strip) for 14 AWG wire	1923H17314	\$0.90
Feeder Wire by the Inch - 8 AWG	2202N01076	\$0.43
Feeder Wire by the Inch - 10 AWG	2492P03076	\$0.26
Feeder Wire by the Inch - 12 AWG	0239R07076	\$0.25
Feeder Wire by the Inch - 14 AWG	0288N01076	\$0.20

# Kiln Brick, Lids & Slabs

"Old Style" refers to kilns without "KS" or "KM" prefixes in their model number.



MODEL	TYPE	PART #	PRICE
1627-3"	S	2230	\$17.25
	S (END)	2233	\$17.25
	P	2234	\$17.75
	T	2231	\$17.75
	THERMOCOUPLE	2232	\$17.75
	LID	2169	\$2850.00
	SLAB	2168	\$1095.00
All 12 Sided Kilns	S	1400	\$17.25
	P	1401	\$17.75
	T (KM/KS)	1525	\$17.75
	T (OLD STYLE)	1403	\$17.75
	THERMOCOUPLE	1532	\$17.75
	KS (OLD STYLE)	1402	\$17.75
	KS	0450	\$17.75
	LID	0090	\$510.00
	SLAB	0361	\$490.00
All 10 Sided Kilns - 2.5" Brick	S	0162	\$16.25
	P	0164	\$16.75
	T (KM/KS)	1527	\$16.75
	T (OLD STYLE)	0165	\$16.75
	THERMOCOUPLE	1534	\$16.75
	KS (OLD STYLE)	0167	\$16.75
	KS	0451	\$16.75
	LID	0160	\$335.00
	SLAB	0161	\$320.00
All 10 Sided Kilns - 3" Brick	S	1407	\$17.25
	P	1409	\$17.75
	T (KM/KS)	1526	\$17.75
	T (OLD STYLE)	1413	\$17.75
	THERMOCOUPLE	1533	\$17.75
	KS (OLD STYLE)	1411	\$17.75
	KS	0452	\$17.75
	LID	0880	\$390.00
	SLAB	0869	\$375.00

MODEL	TYPE	PART #	PRICE
All 8 Sided Kilns - 2.5" Brick	S	0262	\$16.25
	P	0264	\$16.75
	T (KM/KS)	1528	\$16.75
	T (OLD STYLE)	0265	\$16.75
	THERMOCOUPLE	1535	\$16.75
	KS (OLD STYLE)	0267	\$16.75
	KS	0453	\$16.75
	LID	0260	\$230.00
	SLAB	0261	\$220.00
All 8 Sided Kilns - 3" Brick	S	1406	\$17.25
	P	1408	\$17.75
	T (KM/KS)	1529	\$17.75
	T (OLD STYLE)	1412	\$17.75
	THERMOCOUPLE	1536	\$17.75
	KS (OLD STYLE)	1410	\$17.75
	KS	0454	\$17.75
	LID	0833	\$250.00
	SLAB	0817	\$240.00
714, 145	S	0462	\$16.25
	P	0464	\$16.75
	T (KM/KS)	1530	\$16.75
	T (OLD STYLE)	0465	\$16.75
	THERMOCOUPLE	1537	\$16.75
	KS (OLD STYLE)	0467	\$16.75
	KS	0455	\$16.75
	LID	0460	\$200.00
	SLAB	0461	\$195.00
614-3"	S	1418	\$17.25
	P	1421	\$17.75
	T (KM/KS)	1531	\$17.75
	T (OLD STYLE)	1419	\$17.75
	THERMOCOUPLE	1538	\$17.75
	KS (OLD STYLE)	1420	\$17.75
	KS	0456	\$17.75
	LID	1035	\$175.00
	SLAB	1031	\$170.00
609	S	0066	\$16.25
	P	0064	\$16.75
	T	0065	\$16.75
	KS	0067	\$16.75
	LID	0335	\$165.00
	SLAB	0336	\$160.00
FireBox 8x6/8x4	LID	1250	\$107.00
	SLAB	1360	\$102.00